

<http://www.daz3d.com/forums/viewthread/8441/>

@tlantis, Posted: 25. September 2012 01:46 PM

Creating Forests out of Terrain and Lattice.

You may want to view this document zoomed to 200% size.

I found this material in vegetation /small plants / foliage and foliage 2.

I think it's perfect for creating forest scapes

In picture 1 I created a terrain went into editor clicked new and added spikes, then added foliage material and placed the terrains randomly

Looks like an evergreen forest.

In the other pictures I created a lattice went into editor clicked new and added mounds, I used the slider to make the mounds separate from each other, then again foliage material and placed lattice objects randomly on ground. Looks like common forest.

Well they do in my eyes. lol...

Only problem is this only works within a birds view

Maybe someone can use this.

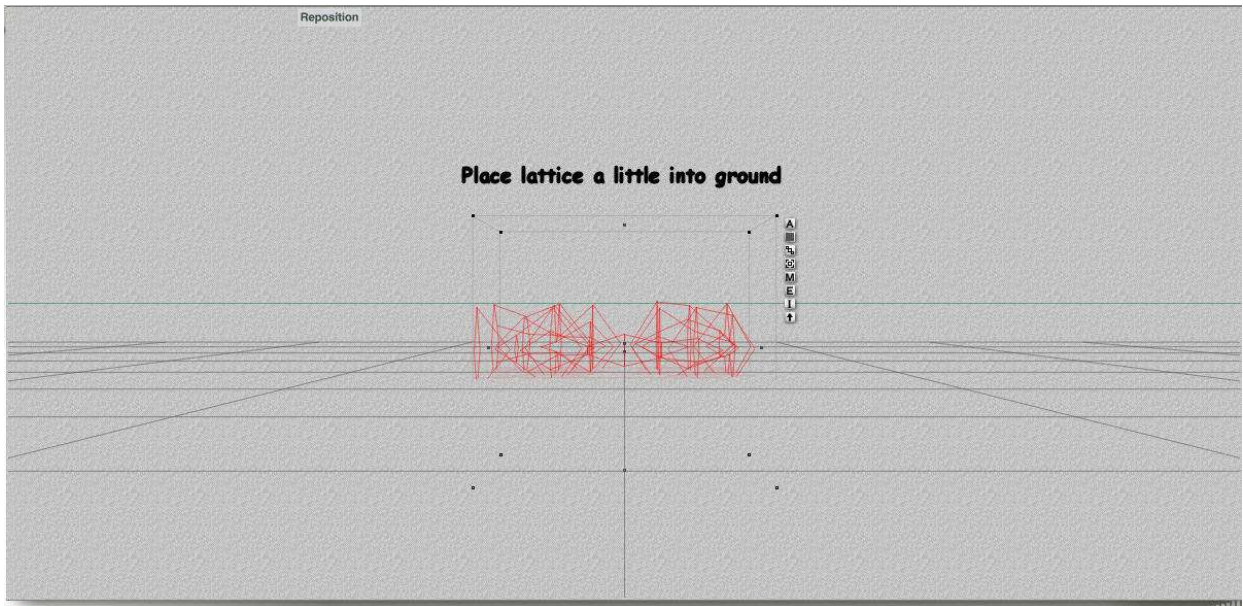
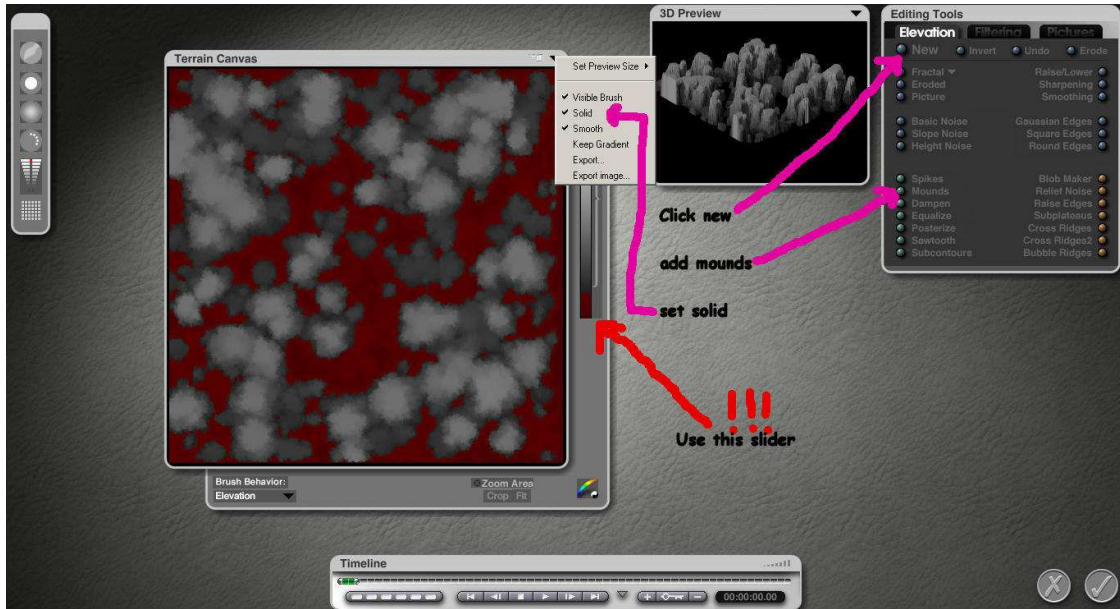
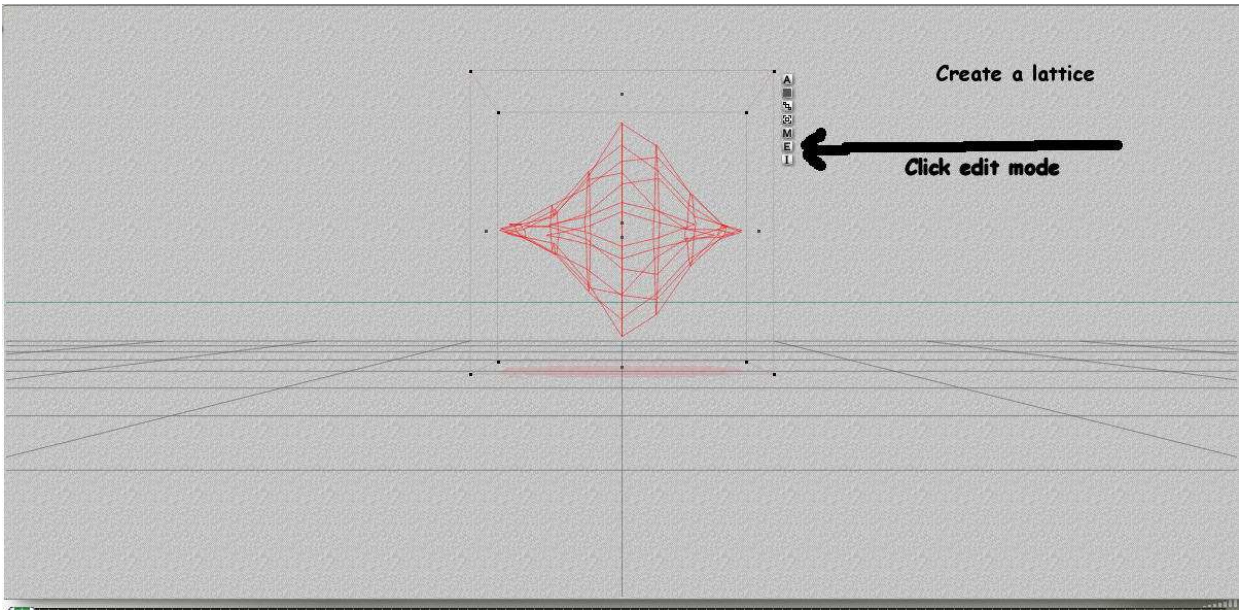
Scroll to post 6 in this thread for a tutorial.... (here to page 2)

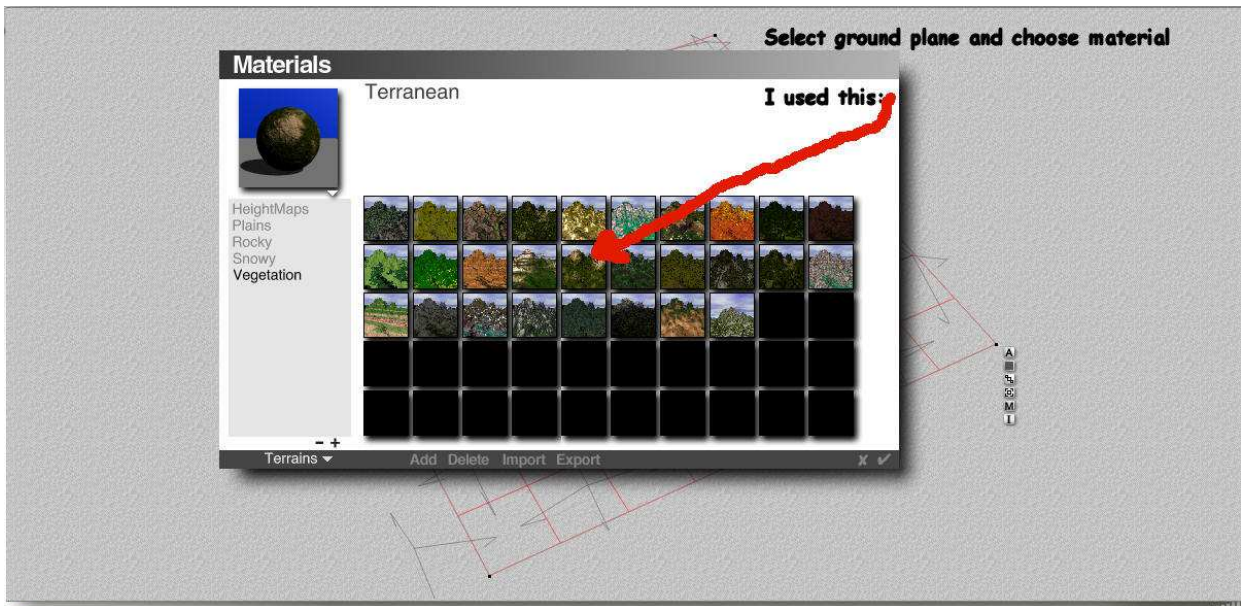
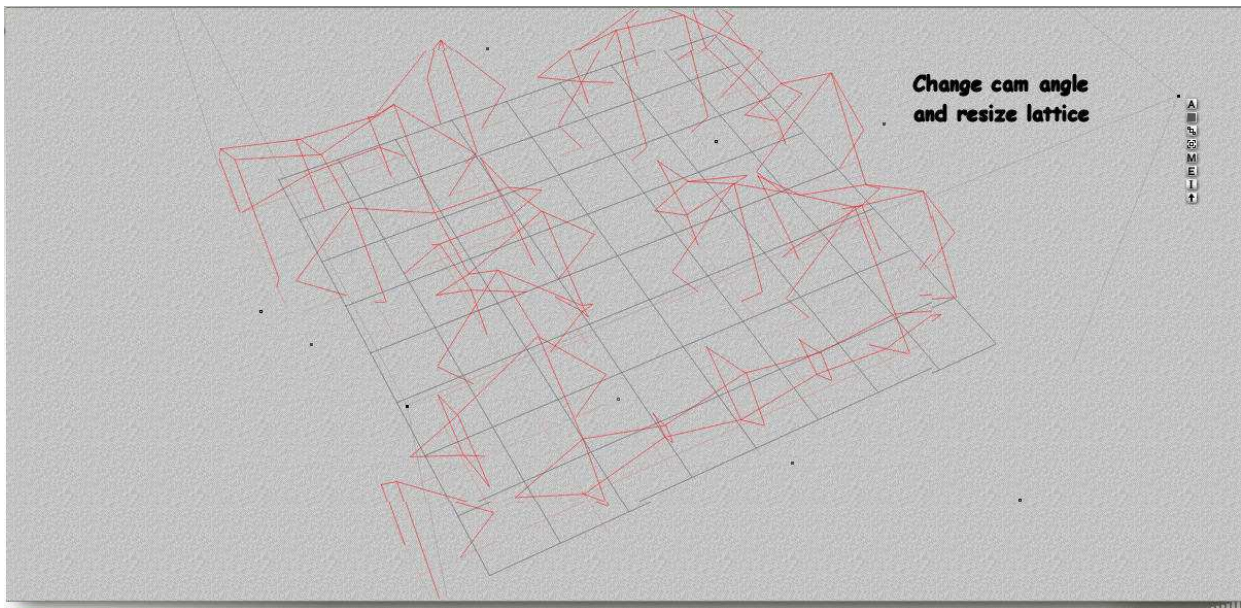




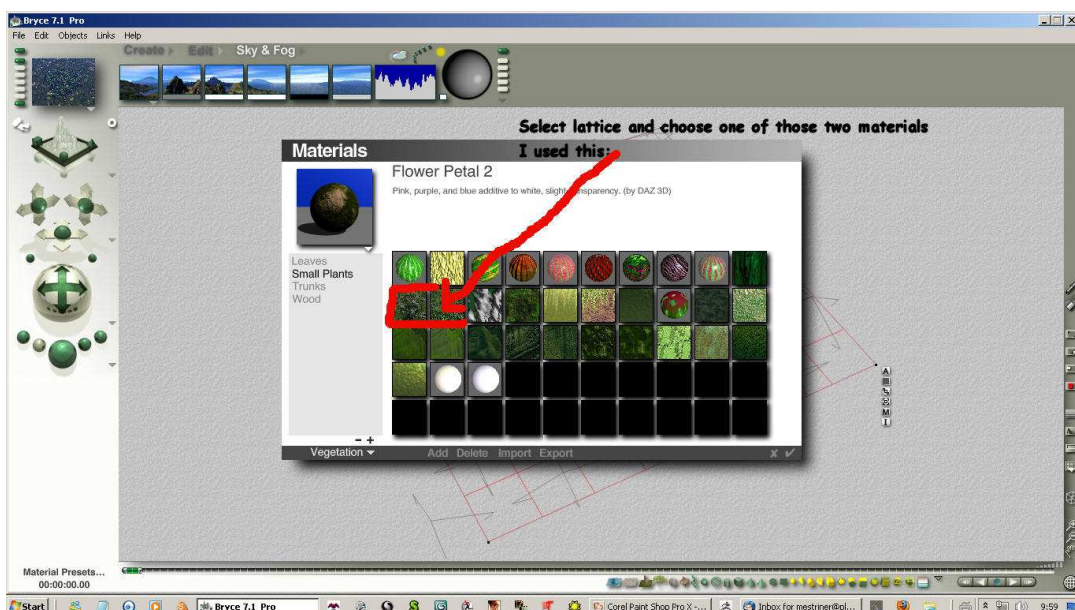
Example images above. Tutorial starts on next page.

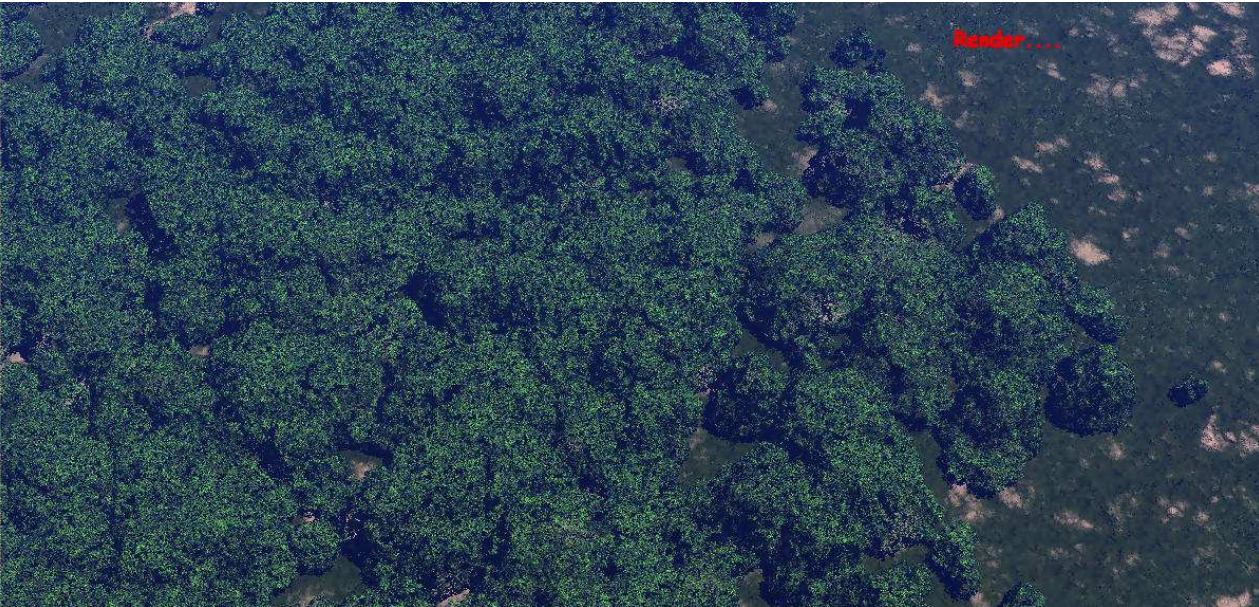
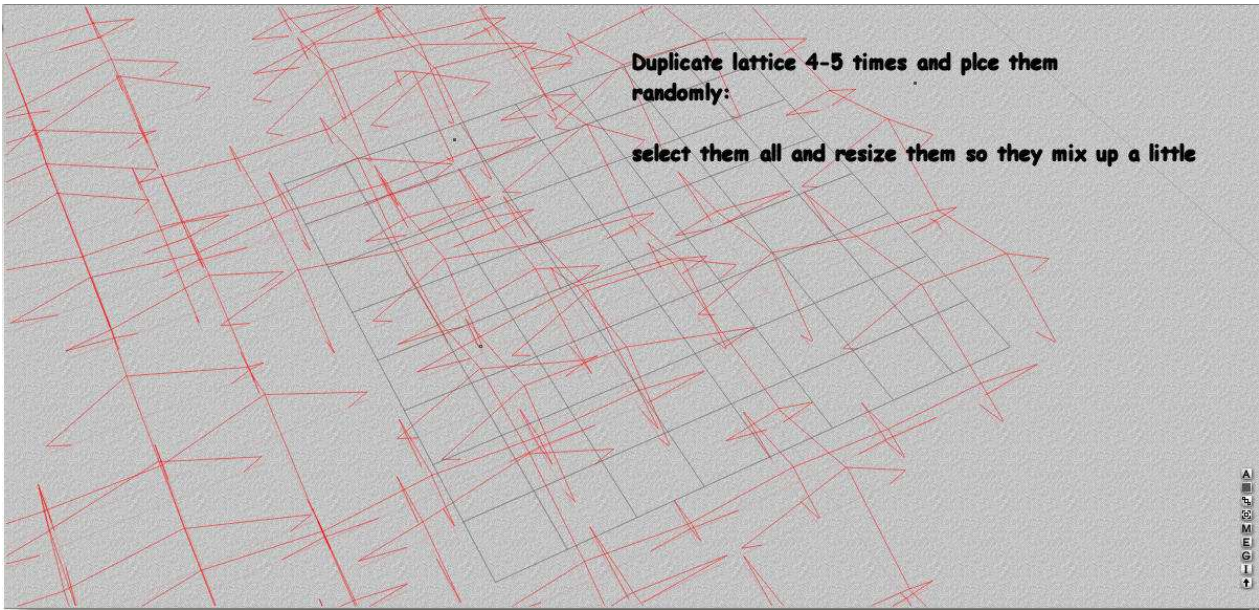
Tutorial Posted: 28. September 2012 02:27 AM





Lattice material can be found in vegetation:





<http://www.daz3d.com/forums/viewthread/8441/>

Atlantis